

VCC – Völkel Compaction Control®

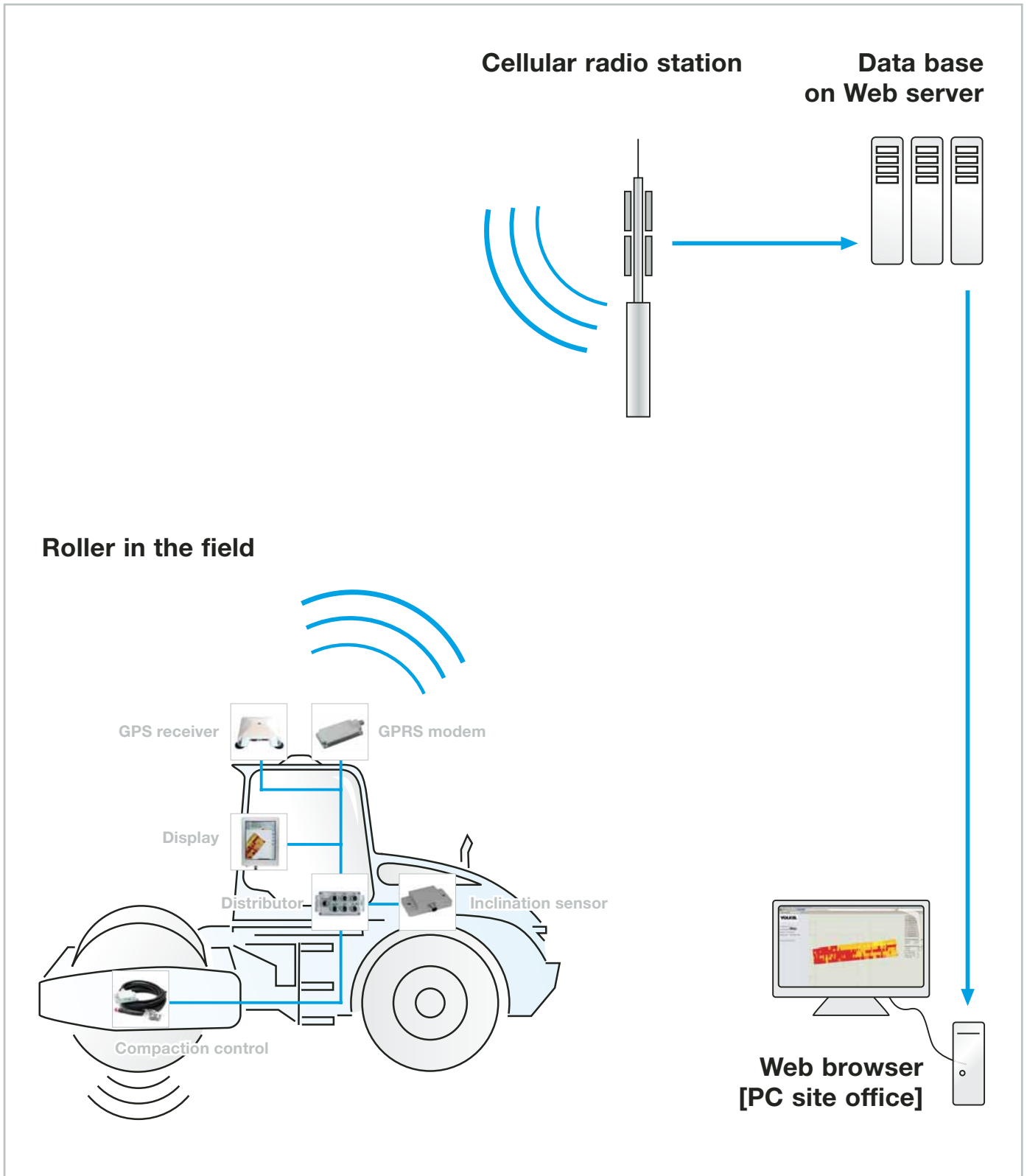
VCC navigator



VCC – Völkel Compaction Control®

VCC navigator

Automatic safe data transfer
to the Web server



Comprehensive compaction control – surprisingly simple

Easy assembly

Only the sensor ASC for recording compaction data is fixed in its position on the bandage. The position variance of the GPS aerial in the height, longitudinal and transverse inclination is taken into account automatically, the slope angle of the roller is measured and the steering angle is generated and calculated from the continuously measured geodata. All components are easy to interconnect with the pre-assembled cables.

Easy to set up

All settings for compaction measurement on the roller to loading the construction drawing can be made at the PC in the site office and sent to the roller via a modem using wireless transmission. Inputs on the display in the machine are likewise possible however not necessary.

Easy to operate

Measurement starts automatically when the vibration is activated. The roller driver now receives current information regarding the compaction status, compaction growth, number of cycles etc. on the display in the machine. Intuitively he can recognize with the help of colouring which areas are to be finished.

Easy to save

The measurement data is transferred to a Web server via GPRS mobile communications, using a safe data connection, and saved there in a database. The construction manager can therefore practically assess the measurement values and the installation progress at the construction site simultaneously to the roller driver. Alternatively to data transfer via modem, data exchange via USB stick is also possible.

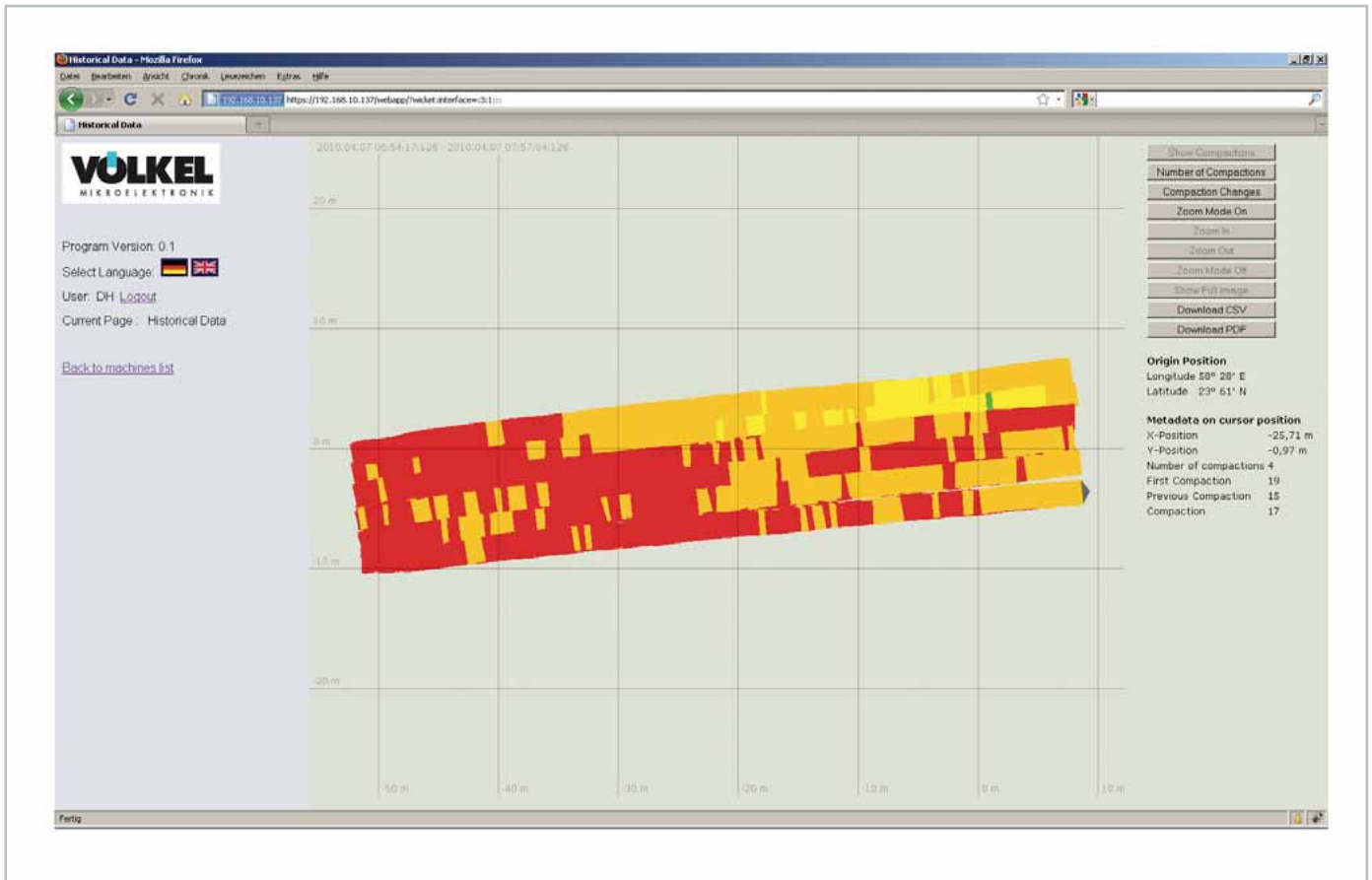
Easy to evaluate

Via Internet browser using a secured connection the portal CompactDocWeb is reached. It enables analysis of the data and printout of the measurement protocol in accordance with CCC Guidelines. Various export functions are available for the further processing of the construction project with other programs.

**View of the measurement values
on the monitor in the roller**



Simultaneous depiction in the site office

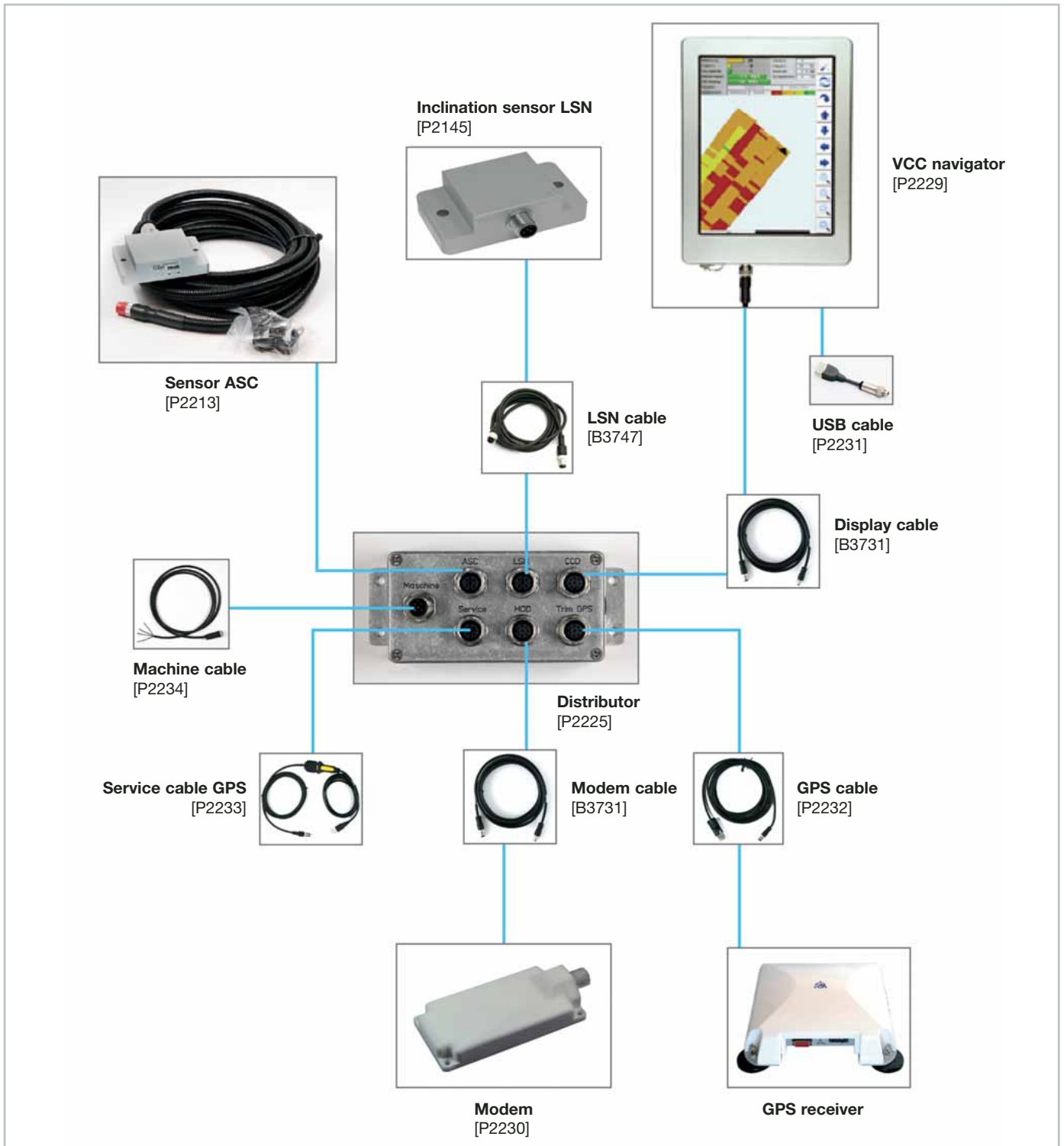


Automatic recording of the compaction data

The VCC navigator records the compaction data georeferenced without assistance from the roller driver, transfers it to a server via GPRS mobile communications and simultaneously depicts it both on the display in the machine and on the PC in the site office.

The roller driver is neither restricted in his typical work nor burdened with additional measurement tasks and can therefore concentrate on his actual task of achieving an optimum compaction result.

Connecting the VCC navigator

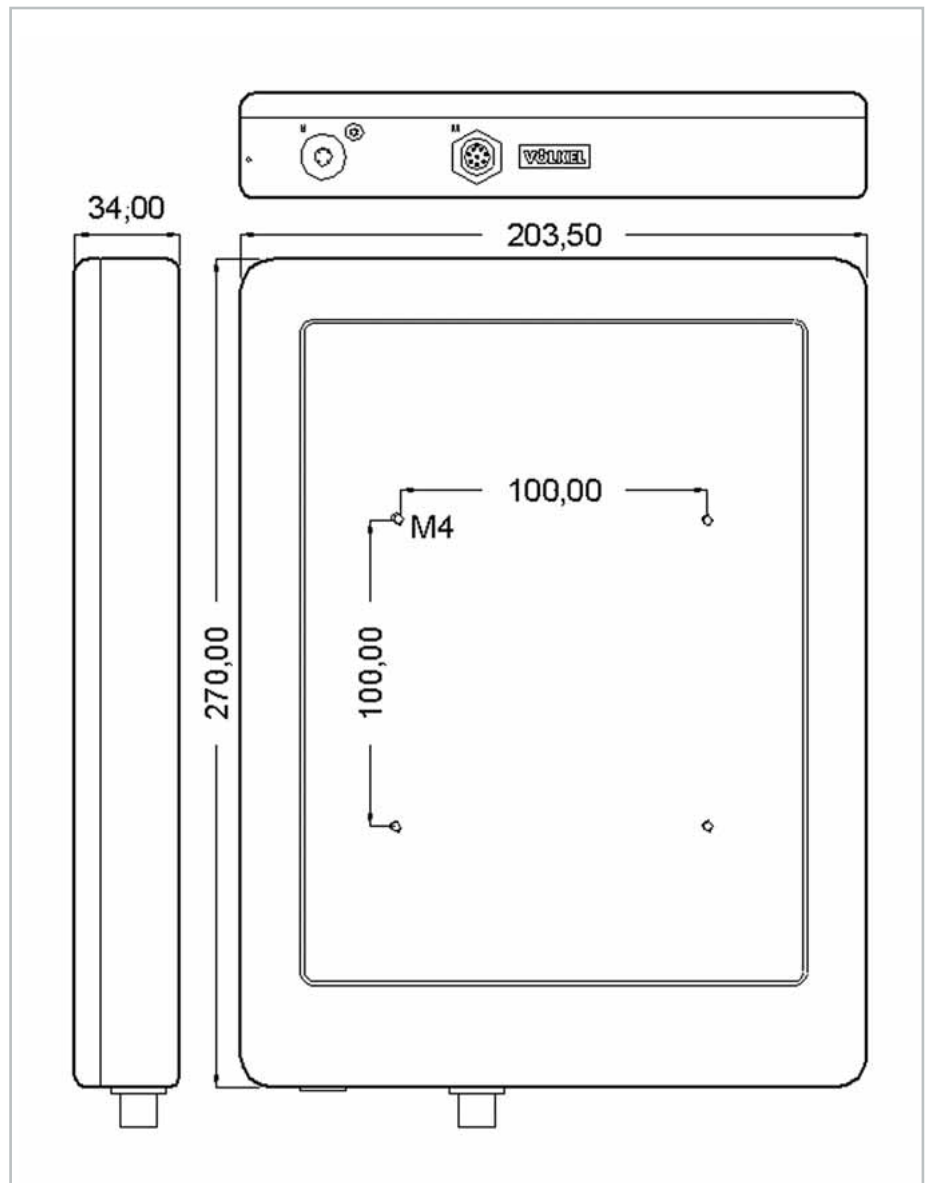


VCC navigator

Properties of the display

The display with a 10 inch screen diagonal is enclosed in a robust aluminium housing and intended for use in the rough environmental conditions of a construction site.

The touch screen is protected with scratchproof mineral glass, supporting intuitive operation of the VCC navigator. Large buttons enable ergonomic working.



VCC navigator technical data

Dimensions	270x203,5x34 mm
Weight	1100g
Operation	Touch screen, capacitive, glass
Memory	4 GB
Display	10,4inch, vertical LED backlighting
Housing	Anodised aluminium
Protection category	IP65
Temperature range	-30 ... +70 °C
Power Supply	8 ... 32V, reverse pole protection
Assembly	Vesa standard 100x100mm



Völkel Mikroelektronik GmbH
Otto-Hahn-Straße 30
48161 Münster
Germany

Tel. +49 [0]25 34.97 31-0
Fax +49 [0]25 34.97 31-10

info@voelkel.de
www.voelkel.de

Further information regarding our other products and our company available under www.voelkel.de